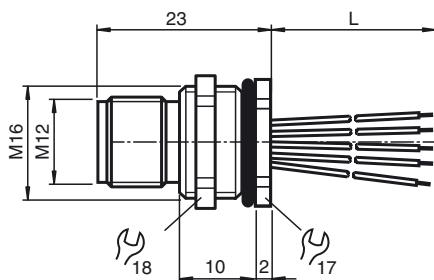




Dimensions



Model Number

V19S-M16H-500

Receptacles, M12/M16, 8-pin

Features

- Rear/screw mounting

Accessories

LOCKNUT M16 NICKEL BRASS

Nut, nickel-plated brass

Technical data

General specifications

Number of pins 8

Electrical specifications

Operating voltage U_B max. 30 V DC
 Test voltage > 2000 V_{eff} AC
 Operating current I_B max. 2 A
 Volume resistance < 3 mΩ
 Insulation resistance ≥ 100 MΩ

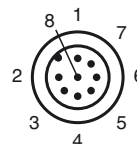
Ambient conditions

Ambient temperature -25 ... 85 °C (-13 ... 185 °F) active
 -40 ... 85 °C (-40 ... 185 °F) fixed
 Pollution degree 3

Mechanical specifications

Degree of protection IP65/IP67
 Connection Tinned copper single leads, Ø1.15 ±0.07 mm
 Material
 Contacts CuZn
 Contact surface Au
 Threaded bushings Zinc die-casting, nickel-plated
 Seal FKM
 Core insulation TPE
 Cable
 Cores 8 x 0.25 mm²
 Conductor construction 14 x 0.15 mm Ø AWG 24
 Length L 500 mm
 Installation Rear mounting M16

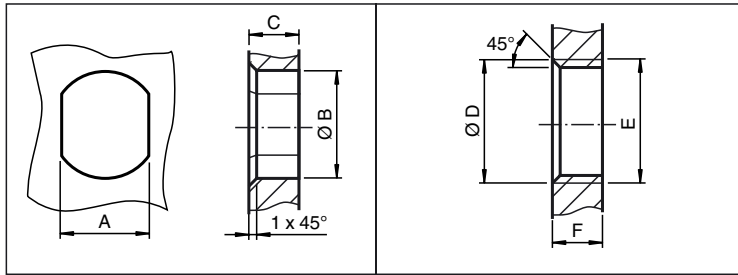
Electrical connection



Electrical connection

1	—	WH
2	—	BN
3	—	GN
4	—	YE
5	—	GY
6	—	PK
7	—	BU
8	—	RD

Installation Note



	A	B	C	D	E	F
M8	7.1 ^{+0.1}	Ø 8.2 ^{+0.1}	2 - 4 mm	-	M8x0.5	2 - 4 mm
M12	11 ^{+0.1}	Ø 12.2 ^{+0.1}	< 4 mm	-	M12x1	< 4.5 mm
M16	13.5 ^{+0.1}	Ø 16.1	< 4.5 mm	Ø 17 ^{+0.2}	M16x1.5	> 2.5 mm
M20	13.5 ^{+0.1}	Ø 20.1	-	Ø 20 ^{+0.2}	M20x1.5	< 6 mm
PG9	13.5 ^{+0.1}	Ø 15.3 ^{+0.1}	< 4.5 mm	Ø 16	PG9	> 2.5 mm
PG13.5	18.8 ^{+0.1}	Ø 20.5 ^{+0.1}	-	Ø 22 ^{±0.1}	PG13.5	-